

PART OF S.W. 1/4 OF SECTION 9, T.6N., R.1W., S.L.B. & M.

IN OGDEN CITY & RANDALL DISTRICT

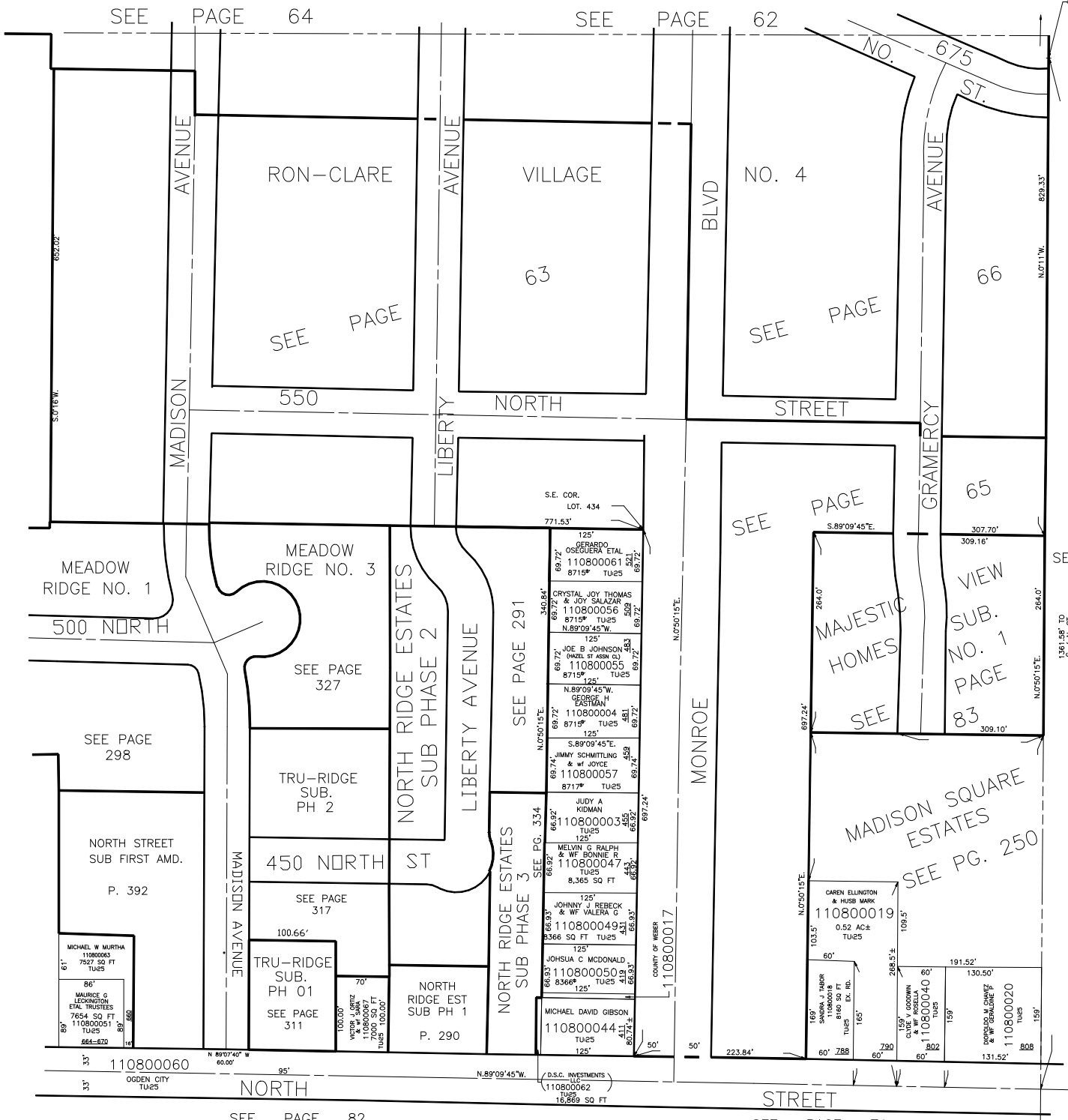
PREFIX: 11-080

TAXING UNIT: 25, 337

SCALE 1" = 100'

ALSO SEE PAGE 80-2

APPROX. LOCATION of N.E. COR. of SW 1/4, for some descs.



SEE PAGE 64

SEE PAGE 62

MADISON AVENUE

LIBERTY AVENUE

BLVD

GRAMERCY AVENUE

RON-CLARE

VILLAGE

NO. 4

SEE PAGE

SEE PAGE

550

NORTH STREET

STREET

66

629.33'

N.0711'W.

MEADOW RIDGE NO. 1

MEADOW RIDGE NO. 3

S.E. COR. LOT. 434

771.53'

125' CRISTIANO OSEGUERA ETAL 110800061 8715' TU25 521

125' CRYSTAL JOY THOMAS & JOY SALAZAR 110800056 8715' TU25 509

125' JOE B JOHNSON (HAZEL ST ASHM CL) 110800055 8715' TU25 483

125' N.89°09'45"W. GEORGE H EASTMAN 110800004 8715' TU25 481

125' S.89°09'45"E. JIMMY SCHMITTLING & Wf JOYCE 110800057 8717' TU25 459

125' JUDY A KIDMAN 110800003 455

125' MELVIN G RALPH & Wf BONNIE R 110800047 8366 SQ FT TU25 443

125' JOHNNY J REBECK & Wf VALERIA C 110800049 8366 SQ FT TU25 431

125' JOHSUA C MCDONALD 110800050 8366' TU25 419

125' MICHAEL DAVID GIBSON 110800044 8074' TU25 417

125' (D.S.C. INVESTMENTS) 110800062 16,869 SQ FT TU25 417

SEE PAGE

MAJESTIC HOMES

65

SEE PAGE 71

VIEW SUB. NO. 1 PAGE 83

309.10'

1361.95' TO 6' of N. ST. of SW 1/4

N.0750'15"E. 264.0'

309.10'

500 NORTH

SEE PAGE 327

TRU-RIDGE SUB. PH 2

SEE PAGE 317

TRU-RIDGE SUB. PH 01

SEE PAGE 311

NORTH RIDGE ESTATES SUB PHASE 2

LIBERTY AVENUE

NORTH RIDGE ESTATES SUB PHASE 3

SEE PAGE 291

MONROE

110800017

MADISON SQUARE ESTATES

SEE PG. 250

110800019

110800018

110800040

110800020

110800020

MICHAEL W MURTHA 110800063 7927 SQ FT TU25 460

MAURICE G LOCKINGTON ETAL TRUSTS 110800051 7654 SQ FT TU25 464-870

110800060

OGDEN CITY TU25

NORTH

N.89°09'45"W.

95'

STREET

SEE PAGE 71